

BARD

Undergraduate Faculty Newsletter
Annandale, September 2024
Volume 20, Number 1

from the **Dean of the College**

Deirdre d'Albertis

Welcome back to Annandale! While you were away, we've been busy in Ludlow preparing for the 2024-2025 academic year.

Sherry Gildersleeve and Ben Chinsena have done a great job of coordinating office moves and assignments over the past two months, in consultation with administrative assistants, program directors, and divisional chairs. Please be in touch with Sherry and Ben if you have lingering questions or concerns about your workspace in these first few weeks of term. We are grateful to Michael Emerich and our colleagues in Buildings and Grounds for aiding us in preparations for the fall semester!

August is an extraordinarily busy time for our colleagues in Student Affairs: undergraduates arrive over the course of the entire month--OEI scholars and first years, international and displaced students, transfers, and finally returning second-, third-, and fourth-year Bardians. Special thanks are in order for Professor Brooke Jude who, in her role as Director for Matriculation and Student Success, continues to oversee the process of welcoming new students into the academic programs of the College, along with Sharif Rosen and Ruth Zisman, and to all the faculty registration advisors who helped first-years and transfers to navigate their first registration successfully.

This year's L&T program under Erica Kaufman's new leadership, in tandem with Sean Colonna and Chaya Huber, was a great success.

With the shift of Citizen Science to term time, many hours have been devoted by program director Mary Krembs and assistant directors Rob Todd (outgoing) and Kate Huffer (incoming) to revising and expanding Bard's signature science literacy curriculum in concert with faculty Advisory Committee members Brooke Jude and Emily McLaughlin. First-year students are beginning their Citizen Science experience this week and will be engaged in this new iteration of the program over the next ten weeks.

Please join me in welcoming new Associate Dean of the College Yuka Suzuki to our collective enterprise here in Ludlow. Yuka serves as co-director of the Center for Faculty and Curricular Development (CFCD) along with Associate Dean of the College Nicholas Lewis. In this role, she works to support faculty across the college in developing their teaching and research practices. She coordinates new faculty orientation at the beginning of the academic year with Associate Dean Michael Sadowski, and focuses on initiatives that create equity across programs and divisions. She also serves as the administrative representative on the Institutional Review Board. In addition to being Associate Dean, Yuka is an Associate Professor of Anthropology and is a core member of the Environmental & Urban Studies, Africana Studies, Asian Studies, and Global & International Studies programs.

Outgoing Associate Dean of the College Emily McLaughlin, will continue to support faculty seeking external funding in her new role as Senior Advisor for Faculty Institutional Grants. In this capacity she will serve as an advisor to the Dean of the College and liaison to the Director of the Office of Institutional Support (OIS) and the Office of Post Award Management (OPAM), review applications in the pre-award process for any requested course releases (aligning with Bard's new grant-funded course buy-out policy), curricular initiatives, space/equipment/facilities requests, and/or staffing needs, participate in initial planning meetings with the faculty member(s) and Dean of the College, review final grant application details before submission, and assist faculty in

navigating the [OIS Grant Resource Center](#), including expectations and communications with the Office of Post Award Management (OPAM). Thank you, Emily, for all you have done and will continue to do on behalf of our faculty colleagues and the College!

Laurie Dahlberg will begin her new role as Faculty Director of Montgomery Place this fall. She plans to build on the work of others to develop the educational potential of Montgomery Place (MP). They will be launching an interdisciplinary concentration next fall: Material Culture Studies at Montgomery Place. Laurie will be reaching out this year to faculty across the campus to develop more courses drawing upon MP's diverse collections, while also working to build a robust, reciprocal relationship with the Bard Graduate Center. The material culture concentration could be a natural pathway to the 3:2 program at the BGC already being offered through Historical Studies, Art History/Visual Culture, Anthropology, and the American/Indigenous Studies programs.

This year we will be evaluating an especially large cohort of faculty at all stages of their career at the College. Please be in touch with Rachel Price with any and all questions pertaining to faculty evaluation: she is ready to support and guide all those participating in the evaluation process.

Please take a moment to familiarize yourself with new policies: <https://www.bard.edu/doc/policies/>

Stay tuned for news of more workshops, program directors meetings, and faculty development opportunities this semester. All of us in the Office of the DoC stand ready to assist you with questions and concerns--no matter how large or small--as the fall semester gets underway.

Please join me in welcoming new faculty colleagues to Annandale this fall.*

This year we are joined by three new tenure track colleagues in Annandale:

Erin Atwell, Assistant Professor of Islamic Studies

Emanuele Citera, Assistant Professor of Economics

Natalie Wittlin, Assistant Professor of Psychology

Four colleagues have been converted to tenure-track appointments beginning in 2024-2025:

Luis Chávez to Assistant Professor of Music and American and Indigenous Studies

Yebel Gallegos to Assistant Professor of Dance

Ivan Munuera to Assistant Professor of Architectural Studies

Rob Todd to Assistant Professor of Biology

Finally, hearty congratulations on tenure and/or promotion are very much in order for the following colleagues:

Robert Cioffi promoted to tenured Associate Professor of Classics

Christian Crouch promoted to Professor of Historical Studies and American and Indigenous Studies

Justin Dainer-Best promoted to tenured Associate Professor of Psychology

Marisa Libbon to tenured Associate Professor of Literature

Antonios Kontos promoted to tenured Associate Professor of Physics

Christopher McIntosh promoted to tenured Associate Professor of Political Studies

Rufus Müller promoted to Professor of Music

Julia Rosenbaum promoted to Professor of Art History and Visual Culture

Steven Simon promoted to tenured Associate Professor of Mathematics

*please see the full list of incoming faculty and changes for fall 2024 on the Transition List found on the Office of the Dean of the College website: <https://www.bard.edu/doc/recruitment/>

**The 2024 Michèle Dominy Award
for Teaching Excellence awarded to
Professor Dinaw Mengestu**



The Michèle Dominy Award for Teaching Excellence honors outstanding teachers who exemplify Bard College's commitment to distinction in undergraduate liberal arts and sciences education. The annual award recognizes demonstrated intellectually rigorous and challenging teaching, creativity in course design and the application of innovative teaching concepts and methods, and energetic engagement within and outside of the classroom.

The Michèle Dominy Award for Teaching Excellence was established in 2015 by the faculty and administration of the College to honor Professor Dominy's fourteen years of service as dean of the college.

The 2024 Michèle Dominy Award for Teaching Excellence was awarded to John D. and Catherine T. MacArthur Professor of the Humanities Dinaw Mengestu.

Since arriving at Bard almost a decade ago, Professor Mengestu has brought abundant wisdom, creativity, and equanimity to every one of the many roles he plays at Bard. He is one of the most consequential teachers in the Written Arts Program, as well as its Director. Occupying these roles demonstrates Professor Mengestu's ability to think simultaneously administratively as well as pedagogically—no mean feat—while continuing to produce world-renowned

fiction of his own (a new novel is forthcoming this summer).

He presided over the program through the pandemic and various crises with exemplary resourcefulness and benignity. He has created the Center for Ethics and Writing, which has already distinguished the College and which has created an umbrella for a wide diversity of courses and speakers across the L&L Division. The anthology the new Center sponsors will allow many students to find a wider audience for the creative and critical work they produce. From his arrival, Professor Mengestu has taught at every level, from First Fiction Workshop to the Senior Colloquium: he has sought to know the full span of course offerings and experience every level of student. He also created innovative courses that expand the Program's curriculum such as Hybrid Forms and Problems in Perspective which responsibly nudge students out of their own comfort zone under Professor Mengestu's extremely astute and compassionate tutelage. These courses involve interdisciplinarity (visual arts/photography in addition to verbal arts and theory), as well as the connection of art and writing to the wider world in all its complex sociopolitical aspects.

The question of how one writes and reads is always a matter of ethical concern; how we represent and interpret the world is at the very foundation of how we live our lives. The ambition to do so to the greatest degree of honesty and precision is at the core of Professor Mengestu's teaching practice, and he holds himself and all his students to a very high standard. Through the rigor, innovation, and effectiveness of his teaching, he is always prodding at assumptions, pushing students to question their beliefs and modes of thinking, and to wonder about the mechanisms of thought that underlay the way we see reality.

Professor Mengestu has been an eminently humane presence in the College as a whole, stepping up in instances of conflict to offer problem-solving perspectives and dreaming up numerous student events, not only as a Program Director but also as a member of Bard's faculty in residence program. We honor Dinaw Mengestu for his dedicated work among us as such a natural and benevolent leader.

**The 2024 Stuart Levine Award
for Leadership and Collegiality awarded to
Philip Pardi**



The Stuart Levine Award for Leadership and Collegiality honors faculty members who advance Bard College's commitment to distinction in undergraduate liberal arts and sciences education in and outside the classroom. The annual award recognizes those who demonstrate extraordinary dedication to the institution and its mission. Through distinctive contributions to the life of the College, award recipients foster and help to realize values of curiosity, excellence, integrity, and mutual respect among all members of the Bard community.

The Stuart Levine Award for Leadership and Collegiality was established in 2021 by the faculty and administration to honor Stuart Levine, professor emeritus of psychology and dean emeritus, who joined the Bard faculty in 1964 and devoted 56 years of continuous service to the College.

The contributions of this year's recipient to the College embody Stuart Levine's values and honor his legacy. **The 2024 Stuart Levine Award for Leadership and Collegiality was awarded to Director of College Writing and Writer in Residence Philip Pardi.**

It is no coincidence that the four words attached to the Stuart Levine Award—curiosity, excellence, integrity, and mutual respect—have surfaced in the dozens of letters in support of Phil Pardi's nomination. Colleagues have found it impossible to

separate his approach to caring for and mentoring his colleagues from essential aspects of his character. It is difficult to imagine someone with more grace and humility, with less smallness or conceit, than Phil Pardi.

Phil's form of leadership is a quiet one, which is all the more reason to celebrate it with this accolade. If you pay attention, it is visible in the daily walks he takes about campus with faculty from every division, every program, every age and intellectual orientation, who come to him for counsel about their teaching. Phil leads all of us to be more attentive to how we learn, and how we care for each other as we learn. How do we accommodate technology in the classroom? How do we recover from conflict in a seminar? How can one teach another how to write? How should a first-year curriculum be envisioned? We rely on Phil to find out.

Phil Pardi's balanced and unfailingly thoughtful and intentional perspective has been a gift to all of us. His presence has helped us tap into a well of collegiality to which we aspire, and has put it into play in our daily practices at Bard. From the faculty in Annandale to the recently arrived Afghan cohort of new Bardians, he embodies what it means to create a campus that is actually alive. Often coaxing us toward our better selves as a teaching and thinking community, he also steers us toward consistency, equity and fairness. He has worked with almost miraculous results with faculty and students, supporting learning and collegiality without ever drawing attention to himself. He has at least two nicknames: the "faculty whisperer" and the "oracle of Annandale." It would be misleading to speak of his "leadership qualities" since they are in fact a perfectly natural extension of his being, the result of sustained and disciplined practice, and thus an inspirational model for the type of teachers and interlocutors we might aspire to become. Phil's revolutionary seven-hour course on the poetics of attention is both a sensation and something perfectly integrated in the lives of his students. Who else could pull this off?

Never demanding recognition for himself, Phil Pardi has transformed the way so many of us approach writing—not only our students', but our own. His unobtrusive leadership, then, should be recognized at least in part because it makes possible the activities and achievements of so many of us.

FALL FACULTY MEETINGS

Faculty Meetings – Wednesdays 1:20 p.m. (held in the Multipurpose Room of the Bertelsmann Campus Center)

September 11, October 2 (faculty-led), November 6, and December 18

Executive Committee – Wednesdays 3:00 p.m. – 4:30 p.m. (Ludlow 301)

Curriculum Committee – Tuesdays 2:00 p.m. – 3:30 p.m. (Ludlow 301)

Planning and Appointments Committee – Mondays 10:00 a.m. – 11:30 a.m. (Ludlow 301)

Faculty Senate Meetings – held on the first Tuesday of every month from 8:30 a.m. – 10:00 a.m.

September 3, October 1, November 5, December 3 (Hegeman 204A)

**** PLEASE SAVE THE DATES****

Fall Faculty Seminar Events

(these events begin with a reception from 5:00 p.m. - 5:30 p.m. and are followed by a presentation from 5:30 p.m. 6:30 p.m. Location: Hegeman 204 and 204A)

September 18, 2024: Valerie Barr

October 9, 2024: Franz Nicolay

October 30, 2024: Lisa Sanditz

December 4, 2024: Joe Luzzi

(Spring Faculty Seminar Events - TBD)

from the **Program Associate in the Office of the Dean of the College & Program Associate for the CFCD_____**

Antonio Ortiz

Over the course of the 2024-2025 academic year, we look forward to hosting faculty celebrations with each Division of the College. Each divisional celebration will feature the accomplishments of its respective faculty, while also warmly welcoming the attendance of all faculty to honor and support the efforts of their colleagues. We will be hosting two celebrations in the fall, and two in the spring.

Faculty who wish to be honored at divisional celebrations should complete the Google form [here](#), providing all requested information, so that a poster featuring their accomplishment can be created and displayed at the celebration.

Fall and Spring Faculty Celebration Events

(these events run from 5:30 p.m. - 7:00 p.m. in Finberg House)

November 13, 2024: SST Division

December 11, 2024: ARTS Division

February 19, 2025: L&L Division

April 2, 2025: SMC Division

from the **Associate Vice President for Academic Initiatives and Associate Dean of the College** _____
Nicholas Lewis

Bard AMP Hub

In March 2024, Bard College received a \$55,926 grant from the Council for Independent Colleges, and supported by the Lilly Endowment Inc., through their Network for Vocation in Undergraduate Education ([NetVUE](#)) program, to establish the Bard AMP Hub, which aims to foster a vital and sustainable network of campus partners, capable of and dedicated to engaging students in conversations on amplifying meaning-making and purpose in their lives. The Bard AMP Hub will serve as a means of connecting various programs and initiatives through which students currently engage in vocational exploration on campus—from initiatives within the Language and Thinking, First-Year Seminar, and Citizen Science programs to those within the offices of the Dean of the College, Dean of Student Affairs, Dean of Studies, Career Development, Diversity, Equity, and Inclusion, and Disability Access Services.

The NetVUE grant will expand the scope of vocational engagement to professionals throughout the College and focus on professional development opportunities designed to support students in cultivating meaning-making and purpose in their life and work. Starting this fall, faculty, staff, and administrators will have the opportunity to join reading groups, attend keynote talks, and engage in workshops, including reflection workshops and facilitator training workshops, all towards earning a Bard AMP Certificate of Completion. Certified faculty and staff who have completed a facilitator training workshop would then be credentialed to facilitate future reading groups and workshops, creating a sustainable stream of leaders to carry forward future iterations of programming. For more information, please contact project leaders Nicholas Lewis (nlewis@bard.edu) and Antonio Ortiz (aortiz@bard.edu).

Parkhurst Dining Services Updates - Fall 2024

Faculty Celebration in the Dining Room

In spring 2024, frames were mounted to the north wall of the FSDR to feature faculty celebration posters created for the Divisional Celebrations on an ongoing rotation. Posters will be displayed on a weekly basis, with new posters

being installed each Friday. In coming months, we look forward to expanding the sites and locations where we will be able to feature faculty accomplishments through the display of celebration posters.

FSDR Refreshment Station

The Faculty-Staff Dining Room (FSDR) Refreshment Station will be open Monday through Friday from 8:00 a.m. to 7:00 p.m., featuring coffee, decaf, hot tea, and infused water. As an added weekday afternoon bonus, the Bard Bakery Team will stock the refreshment station with fresh desserts (options will vary). The FSDR will, however, no longer have a self-serve ice cream station. The FSDR Refreshment Station is free of charge and does not require a purchase in Kline dining hall.

Faculty Meals in Kline

Meal Ticket System: Meal tickets for Faculty and Staff are \$8 + tax (all you care to eat - KLINE ONLY) and must be purchased in advance at the Parkhurst office, located near the west entrance to Kline Commons. There, you can purchase tickets from Laurie Kelsey (even at the time of your arrival to Kline), in any quantity to accommodate your needs. People in possession of pre-paid meal tickets can bypass the Kline line by simply placing their ticket into the basket at the register. **Please note that individuals who do not have a pre-paid meal ticket and seek to pay at the register with cash or credit card will be charged \$10 plus tax at the register.

Faculty Evaluation 2024-2025

Electronic Sharing

The Office of the Dean of the College facilitates all faculty evaluations using *Interfolio* (Review, Promotion and Tenure or RPT) in accordance with the evaluation process and procedures as outlined in the Faculty Handbook.

Website links for *Interfolio* resources and videos can be found on the Office of the Dean of the College website on the "Governance" page under "Faculty Evaluations"

Materials for those up for evaluation during the fall 2024 semester have been shared across the divisions to ensure access for all before testimony is received by the Office of the Dean of the College and as faculty prepare for divisional discussions. You should have received email notification to access the files on *Interfolio*. Electronic sharing does not replace hard copy files, they are still available to review in person, by appointment only - please email Rachel Price, rprice@bard.edu, to schedule a time-slot.

Testimony for Evaluation

All members of the College community, and especially tenure-line and regular non-tenure track faculty members in the immediate programs of a faculty member being evaluated, are invited and encouraged to submit signed written testimony concerning faculty members being evaluated.

The dean of the college solicits written testimony from all segments of the Bard community and requests that all such testimony be sent to the Office of the Dean of the College. Evaluatees should not solicit testimony on their own behalf from current or former members of the Bard community.

If you would like to submit a letter to the evaluation file of a faculty member scheduled to be evaluated this semester, **it should be signed** and sent campus mail to the Office of the Dean of the College or via e-mail as an attachment with electronic signature to doc@bard.edu by **Wednesday, September 18**.

***PRETENURE EVALUATION**

Evaluatee	Division/Program
Souleymane Badolo	ARTS/Dance

Lucas Blalock	ARTS/Photography
John Burns	L&L/Spanish
Anne Chen	ARTS/Art History and Visual Culture
Jack Ferver	ARTS/Theater and Performance
Yarran Hominh	SST/Philosophy
Pinar Kemerli	SST/Political Studies
Nabanjan Maitra	SST/Religion
Lucas Guimaraes Pinheiro	SST/Political Studies
Jomaira Salas Pujols	SST/Sociology
Masha Shpolberg	ARTS/Film and Electronic Arts
Clara Sousa-Silva	SMC/Physics
Jenny Xie	L&L/Written Arts
Shuangting Xiong	L&L/Chinese

****NON-TENURE-TRACK EVALUATIONS**

Evaluatee	Division/Program
Joshua Glick	ARTS/Film and Electronic Arts
Brent Green	ARTS/Film and Electronic Arts
Sarah Hennies	ARTS/Music
Kwame Holmes	SST/Human Rights
Tara Lorenzen	ARTS/Dance

*****SENIOR EVALUATIONS**

Evaluatee	Division/Program
Allison McKim	SST/Sociology

*Pretenure evaluation testimony is read by the divisional evaluators, the division chair, the Faculty Evaluation Review Committee (FERC), the dean of the college, and the president.

**Non-tenure-track evaluation testimony is read by the divisional evaluators, the division chair, the College Evaluation Committee (CEC), the associate dean of the college, and the president.

***Senior evaluations are generally scheduled every seven years after tenure or a CEC evaluation or in accordance with contractual agreements, and materials are read by the program director, the division chair, the dean of the college.

Call for Proposals - *Inclusion Grant Challenge*

Academic Program Inclusion Challenge, 2024-2025

The Office of the Dean of the College (DoC) reaffirms its support for the work of inclusion across academic programs at Bard.

The DoC will offer grants between \$500-\$1,000 to academic programs (alone or jointly) that commit to undertaking one initiative to improve access, equity and inclusion for students.

Some examples of initiatives academic programs might propose include:

- Consult with faculty at peer institutions engaging in innovative redesign of intro or gateway courses.
- Sending faculty members to inclusive pedagogy training.
- Developing program specific resources.

- Engaging program wide implicit bias training and engaging bias reduction practices. Learning intergroup dialogue methods.
- Program retreat to share faculty pedagogical best practice.
- Developing a "First to First" mentor initiative in your program. These are mentor relationships between either first generation undergraduates and first generation faculty or between first generation faculty across disciplines.
- Creating a call for student-initiated projects (mini-grants) in your programs that address diversity, equity and inclusion.

These are just suggestions: we encourage you to come up with proposals that speak to the Inclusion Challenge most directly relevant to faculty and students in your program.

Please **submit proposals by September 30th to doc@bard.edu** for projects to be undertaken in the fall or spring of next year.

from the **Dean of Disability Resources and Accessibility**_____

Erin Braselmann

This fall, Disability Access Services is implementing a new software program to manage their high volume of accommodation requests. This means the accommodation letters you receive will be emailed to you in a slightly different format (no longer an attached PDF), and from a different email address (bard-accomodate@symplicity.com); the information in the letters will remain the same.

As always, if you have any questions about implementing accommodations in the classroom, please reach out to Disability Access Services (disabilityservices@bard.edu).

from the **Director of Graduate Admission**_____

Janet Stetson

I am pleased to share the news that Bard has signed a contract with a new company called Sign Language Resources, based out of Newburgh. Please note that having a contract *does not mean we must* use their company to secure interpreters. It simply serves to have this in place to expedite the request for an interpreter. The only stipulation is that we cannot hire one of their interpreters outside of this process. Diane Barkstrom is on their staff and requests for her specifically can be indicated on the request form.

Please contact me to request an interpreter for a class or an event. I will process the form to secure the interpreter and have the bill paid after the event concludes. Please include the budget line to be charged, and Erin Braselmann will need to sign and date with approval.

from the **Associate Dean of the College**_____

Yuka Suzuki

NCFDD: Bard is an institutional member of the National Center for Faculty Diversity and Development (NCFDD), an independent faculty development center dedicated to empowering faculty to thrive in academia. The NCFDD offers a broad range of resources, from 14-day writing challenges and Monday motivator emails to a skills-focused core curriculum and guest expert webinars. In order to take advantage of these resources, we invite you to claim your institutional membership if you haven't done so already. You can activate your personal membership account by visiting <https://www.ncfdd.org/join> and selecting Bard College from the list of members.

In particular, we would like to highlight the NCFDD Faculty Success Program (FSP), a 10 week online program in which participants learn strategies to increase their research and writing productivity while maintaining a healthy work-life balance. The Office of the Dean of the College offers limited institutional funding each year for this transformative program. Applications for Spring 2025 and Summer 2025 are welcome between now and **Friday, September 27, 2024**. If you have any questions about applying, please reach out to Yuka Suzuki (ysuzuki@bard.edu).

from the **Center for Faculty and Curricular Development (CFCD)**_____

The Center for Faculty and Curricular Development (CFCD) works to support the professional and pedagogical development of Bard faculty. This semester, the CFCD team includes co-directors Yuka Suzuki and Nicholas Lewis, faculty fellows Robert Culp and Caitlin Leverson, and program associate Antonio Ortiz. Please visit cfcd.bard.edu to learn more.

CFCD Events Before Fall Break:

- Tues 9/3 **AI & Teaching** (1:30 pm, Kline College Room)
- Mon 9/9 **Creating an Engaged Liberal Arts & Sciences Course** (9 am, Kline College Room)
- Wed 9/18 **Universal Design in the Classroom** (9 am, Faculty/Staff Dining Room)
- Mon 9/23 **Faculty Research & Library Resources** (12 pm, Kline College Room)
- Wed 10/2 **The Midterm Moment** (9 am, Faculty/Staff Dining Room)
- Thurs 10/10 **Eat, Drink, Be** (5 pm, location TBA)

Details will be announced by email the week before each event.

If you have questions about the CFCD, please email Yuka Suzuki (ysuzuki@bard.edu) and/or Nicholas Lewis (nlewis@bard.edu). If you have topics to propose for faculty workshops, or ideas for reading and/or writing groups, please be in touch. We look forward to hearing from you!

from the **Director of Writing, Reading, and Curricular Activities**_____

Phil Pardi

Apparently, AI didn't go away over the summer. So (deep breath) here are [A Few Thoughts about Teaching & ChatGPT](#). (This is the same document that was sent out in mid-August; you'll need to be logged into your Bard account to access it and the links within.) It includes some tips for navigating the presence of AI in our classrooms, several sample syllabi statements, and an important warning about not uploading student work into any AI program.

Bard Research Fund (BRF) Call for Proposals for the 2025-2026 academic year
(with applications due October 15, 2024)

For the 2025-26 academic year, the **Bard Research Fund** Program will offer two types of grants. The first type will be seed grants, intended to get a new project off the ground or to assist with an on-going project. Capped at \$2,000,

these grants will be exempted from letters of recommendation and/or external peer review. The second category are larger grants for up to \$10,000.

- Grants up to \$4,999 will be exempted from letters of recommendation and/or external peer review.
- Grants \$5,000 - \$10,000 will require two letters of recommendation, with at least one letter from a person external to Bard Annandale. The letters must accompany the application. The applicant may also arrange for the letters to be sent directly to the Office of the Dean. In either case, the letters should be received by the submission deadline. Instead of two letters of recommendations, the applicant may request that their proposal be sent out for external review. If so, this must be made explicit in the proposal. The request must also include a short list of potential peer reviewers.

Eligibility: All members of the Bard undergraduate faculty on a long-term appointment one-half time and above, i.e., tenured and tenured-track faculty, or regular nontenure-track faculty (as defined in the Faculty Handbook).

Funding and Duration: Awarded funds will be available July 1, 2025. All funds must be spent by June 15, 2026. Any extensions to this timeframe and alterations to the scope of the grant require approval by the Office of the Dean. New to the program since 2024 are the following **eligible** expenses--book workshops, publication subsidies, and financial support for the purchase of images and equipment in connection with a specific project. Since the program will only be able to cover a portion of these expenses, applicants are encouraged to seek out other sources of funding and to specify in their proposals the percentage of the expenses requested from the program. Other potential sources of support should also be documented in the application. Questions about expense eligibility can be directed to the Office of the Dean of the College (doc@bard.edu). Please keep in mind that salary for the applicant and food expenses are not eligible for support.

Application: A brief 3-5 page application should be submitted in hardcopy to the Office of the Dean of the College as well as in a single PDF to doc@bard.edu. Applicants are asked to:

- Explain the need for funding and whether this project has received prior support from the BRF
- Articulate outcomes expected with additional funding--and how that will be measured/represented
- Provide a timeline for completion of work
- Include possible opportunities for students, if any, in connection to the research proposed
- All recipients will be asked to submit a follow up statement after the funds are used (or they may simply use the professional activities form to include specific reference to BRF).

The revised BRF plan has been formulated by the Faculty Resources Committee in consultation with the Faculty Senate.

Deadline: October 15th, 2024. Awards announced by the beginning of Spring 2025 semester.

from the **Faculty Grants Officer**

for undergraduate faculty from the Arts, Languages and Literature, and Social Studies Divisions

Sue Elvin

Celebrating Faculty Achievements and Encouraging New Endeavors

Over the summer, Bard College's undergraduate faculty members from the arts, languages and literature, and social studies divisions received recognition for their outstanding contributions and innovative projects through national honors, awards, fellowships, and grants, as detailed in the tables below. These achievements are a testament to the creativity, dedication, and personal and professional excellence that define our community.

As we celebrate these successes, I encourage you all as undergraduate faculty members to consider seeking opportunities that align with your individual professional project needs, especially as this prime season for funder application deadlines commences. Whether you are looking to secure support for project materials, fund a performance or exhibition, supplement a sabbatical, take a semester's leave of absence, or complete professional work during the semester, summer, or winter intersession, now is an excellent time to identify prospects and begin planning your applications.

As the Faculty Grants Officer, I am here to support you at every stage—from identifying suitable program opportunities and offering application strategy guidance to reviewing and editing your applications, navigating the submission process, negotiating and managing your awards, and ensuring a successful close-out of your project. Let's build on the momentum demonstrated by our faculty colleagues below and expand the impact of your own work within and beyond our campus community. I look forward to collaborating with you to champion your work and support your success.

Undergraduate Faculty: New Honors, Awards, Fellowships, and Grants: May 21 to September 6, 2024

Conferred Recognitions:

Organization	Type	Purpose	Project Director(s)	Support
Carnegie Corporation of New York , New York, NY	2024 Class of Great Immigrants : celebrates 24 distinguished naturalized citizens from 16 countries who have enriched and strengthened American democracy through their actions and contributions. Honorees represent a wide range of backgrounds and are recognized for their work in public service, education, health, journalism, the arts, and business, among other fields.	Born in Switzerland, President Botstein's immigration history has informed his life decisions. In a 2015 interview with the Carnegie Council for Ethics in International Affairs, he staked out the responsibilities that come with his "position of privilege" as an immigrant to the United States: <i>"You have an obligation to do the right thing and to do the right thing now; that you cannot excuse not acting on behalf of what is right and what is needed; and that you have to imagine that what went wrong in the Second World War, among other things, was the failure of ordinary people to stand up for what was right."</i>	Leon Botstein, Leon Levy Professor in the Arts and Humanities; President of the College; Music Director and Principal Conductor of the American Symphony Orchestra; Founder and Music Director of The Orchestra Now; Artistic Codirector of Bard Summer Scape and the Bard Music Festival; Principal Guest Conductor of the Jerusalem Symphony Orchestra	N/A

Application or Nomination Required:

Organization	Type	Purpose	Project Director(s)	Support
<p>Asian Cultural Council, New York, NY.</p>	<p>Individual Fellowship in 2024 Global Grant Cycle: Offered annually for one to six months duration to artists, scholars, and specialists to connect with their peers in India, Japan, Vietnam, Indonesia, Bangladesh, Bhutan, China, Taiwan, Philippines, Pakistan, Cambodia, Malaysia, Mongolia, Singapore, South Korea, Thailand, East Timor, and the U.S.</p>	<p>In support of Heeryoon’s research to investigate the localized reception of blue-and-white ceramics in colonial India and examine the innovative architectural reuse of Chinese, Dutch, and British ceramics in Indian interiors. Blue-and-white ceramics in palace interiors are often viewed as imitations of European collecting practices or as too foreign for India’s national art history. Her project seeks to reframe these spaces as sites of rich cultural exchanges shaped by Indian patrons and artists, highlighting Indian creativity and agency in ceramic practices, and contributing to the decolonization of global art history.</p>	<p>Heeryoon Shin, Assistant Professor of Art History and Visual Culture</p>	<p>\$5,500 in support of project related research expenses in India</p>
<p>The Fulbright Program, overseeing administrators. co-sponsored by the Bureau of Educational and Cultural Affairs of the U.S. Dept. of State Funded by the Brazilian government through the Federal Agency for Support and Evaluation of Graduate Education – CAPES</p>	<p>2024 Fulbright U.S. Scholar Award to Brazil: with key institutional connections being Universidade do Estado do Rio de Janeiro (<i>UERJ - The State University of Rio de Janeiro</i>) and Redes da Maré, a civil society institution that produces knowledge, projects and actions to ensure effective public policies that improve the lives of 140,000 residents of Maré’s favelas.</p>	<p>In support of Peter’s research for his current book project, <i>The Favela and the Sea: Examining the Intersection of Fishing, Urbanization, and Environmental (In)Justice</i>, he will conduct archival research, oral history collection, and interviews from August to November 2024. His project analyzes how—since the mid 20th century—urbanization, industrialization, militarization, and climate change are threatening and transforming fishing practices and the environmental landscape that historically have buoyed the favela communities in Complexo da Maré, northern Rio de Janeiro, Brazil.</p>	<p>Peter Klein, Associate Professor of Sociology and Environmental and Urban Studies</p>	<p>Package: travel, relocation, stipend, additional benefits.</p>

<p>National Endowment for the Humanities, Washington, DC.</p>	<p>Public Scholars Award: being one of 25 Public Scholars Awards, and part of \$37.5 million in NEH grants for 240 humanities projects across the country, announced in the third and last round of NEH funding for fiscal year 2024.</p>	<p>In support of Peter writing his upcoming book, <i>Sibyl and Siren: A Life of Ingeborg Bachmann (1923-1973)</i>. Poet and author Ingeborg Bachmann remains an iconic figure in postwar German literature. With the blessings of her heirs to write her biography, Peter has already completed much of the necessary research for his book—including translating her personal correspondence, manuscripts, acceptance speeches, essays, poems, stories, librettos, novels, and critical commentary from scholars—as well as studying historical documents, reviews, and memoirs from family members.</p>	<p>Peter Filkins, Richard B. Fisher Professor of Literature at Simon's Rock; Visiting Professor at Bard College</p>	<p>\$50,000</p>
<p>Institute for Humane Studies, at George Mason University, Arlington, VA</p>	<p>Expenses Grant 2024: under the focus area, <i>Trust and Polarization</i>. Awards grants on a rolling basis from \$500 to \$5,000 (with potential for higher awards for exceptional projects) to faculty researching within the liberal arts tradition at accredited colleges or universities, covering travel, collaborations, journal submissions, and other eligible expenses. #IHSFunded</p>	<p>To support Karen's book project, <i>Successful Religious Pluralism in the Mediterranean: A Comparative-Historical Study</i>, through archival trips to update research on Marseille Espérance, a faith leaders' committee in Marseille, France, and to study Sufi Islam and Judaism at the Simon Attias Synagogue and Haim Zafrani Research Center in Essaouira, Morocco, known for Jewish-Muslim coexistence; and to fund undergraduate student transcription, translation, and organization of Greek interviews into English.</p>	<p>Karen Barkey, Charles Theodore Kellogg and Bertie K. Hawver Kellogg Chair of Sociology and Religion</p>	<p>\$5,000 for research related archival trips and under-graduate student research support</p>

<p>The Pirate's Alley Faulkner Society Inc., New Orleans, LA.: a non-profit literary and educational organization.</p> <p>The Prize for a Novel is funded annually by private donors.</p>	<p>2024 William Faulkner-William Wisdom Creative Writing Competition: Category One: Novel: honors not-yet-published works in fiction, nonfiction, and poetry, often by new writers, or writers new to their genres. Chosen from 188 novels and short story collections entered for this year's award.</p>	<p>Recognizes Michael's first novel, <i>Indiana Queer</i>, which tells the story of a gay Boston-area high school teacher who leaves his comfortable New England bubble to teach in rural Indiana just as the state's "Don't Say Gay or Trans" laws are taking effect—and the past relationship that compels him to do it. Set both in the 2020s and the 1980s, <i>Indiana Queer</i> depicts the changing face of anti-queerness at two different time periods in the same Midwestern community.</p>	<p>Michael Sadowski, Undergraduate Faculty, Human Rights Program, and Common Courses; Associate Professor, Bard Master of Arts in Teaching Program; Associate Dean of the College</p>	<p>Prize of \$7,500 and a gold medal: to be presented at the Society's annual Faulkner Festival in New Orleans on September 29, 2024.</p>
---	---	--	---	---

All awards are for the individual faculty member and their personal and/or professional contributions, and not for the institution.

Faculty Grants Officer: Sue Elvin: email: selvinco@bard.edu: or phone: 845.758.7120

Office Hours by Appointment: Tuesdays and Thursdays in Spring and Fall 2024 Semester: 10am-Noon: in Room 402 in the Stevenson Library.

from the **Office of Institutional Support**

Megan Miller

Updates from the Office of Development and Alumni/ae Affairs

Save the date! October 25-27, 2024

Family and Alumni/ae Weekend, October 25th-October 27th, is right around the corner! This is always a great weekend with festivities including classes, tours, a Men's Soccer game, and a concert by the Bard Conservatory Orchestra, with maestro Leon Botstein at the Fisher Center. Thank you in advance to the faculty who teach classes so Bard families can get a sense of what their students experience. Classes are a highlight of their weekend and always receive rave reviews.

Office of Institutional Support

The Office of Institutional Support (OIS), one of three offices within the Office of Development and Alumni/ae Affairs, manages the College's fundraising efforts from foundations, government agencies, corporations, and other entities to support College-wide needs and maintain the College's ability to raise and receive funding. The Office of Prospect Research (OPR), situated within OIS, researches and identifies potential sources of funding and individual donors for the College and recommends outreach efforts. We work with undergraduate and graduate faculty and programs to identify funding for diverse, multidisciplinary projects that support Bard's mission and its vital role in the community.

Are you interested in applying for grant awards or learning more about the process and the possible benefits of grant-seeking? Come visit us! OIS will be in RKC 200 from 3:30-5:00 pm each Thursday this fall to answer all of your questions or set up a time to chat with us by contacting us at ois@bard.edu.

OIS also manages an in-depth online Resource Center for those interested in applying for grants. Please visit <https://www.bard.edu/institutionalsupport/resources/> for more information about accessing grant funding, both institutional and individual.

Below are just a few highlights of the grant awards received by the College and its programs since the last Newsletter in May. Congratulations to all of the faculty and project directors on their new grant awards!

Support for Annandale Faculty-Directed Projects

Several faculty awards have been received since the last newsletter including:

- Assistant Professor Suzanne Kite received a \$500,000 NEH grant to establish a new Humanities Research Center on Artificial Intelligence
- Faculty members Krista Caballero, Beate Liepert, Valarie Barr, and Susan Merriam were awarded a \$75,000 NEH Digital Humanities Advancement Planning grant
- Associate Professor Eli Dueker received a \$69,300 grant from the NYS Department of Environmental Conservation grant supporting the River HABS Watershed Characterization and Communication Toolkit project

Annandale-Based Program Support

Bard College received several grants supporting Annandale-based projects including:

- \$24,244 from the New York State Education Department to support services for students with disabilities.
- \$50,006 from the Dormitory Authority of the State of New York to support the purchase of new equipment for the Conservatory
- \$74,911 from the Library of Congress to support the Teaching with Primary Sources Mapping Boundaries project managed by IWT and MAT
- \$1,000,000 from the Burpee Foundation to support a new Trial Garden, managed by the Arboretum, over four years

Additionally, a grant made by a generous alumna has ensured all first-year students received FYSEM readers and copies of Plato's *Republic* for free, and those with financial need can receive additional course texts at no charge.

And, another alumna, through her family foundation, is supporting the purchase of foreign language textbooks for those students with financial need.

Support for the Fisher Center and the Bard Music Festival

The Fisher Center received a \$15,000 grant from the Lucille Lortel Foundation to support Fisher Center LAB. Additionally, the Bard Music Festival received a \$25,000 grant from the Wise Music Family Foundation to support programming activities.

Support for the Center for Curatorial Studies

The Center for Curatorial Studies received \$25,000 from the Kettering Family Foundation to support the current Carrie Mae Weems exhibition as well as a three-year \$75,000 grant from the Institute for Studies on Latin American Art grant.

Support for the Early Colleges

The Early Colleges received several grant awards including a \$100,000 grant from the Shippy Foundation in support of BHSEC Bronx and a \$1,525,000 NYS Education Department grant to support the sixth Smart Scholars cohort.

Support for BPI

BPI received many grant awards for their work including a three-year \$4.5 million grant from the U.S. Department of Education's Fund for the Improvement of Postsecondary Education (FIPSE). This grant will help support the expansion of BPI programming including the introduction of a MA in Public Humanities degree program.

News from the Office of Alumni/ae Affairs

Welcome back! An especially warm welcome to all the new faculty and a special welcome to Azikiwe Mohammed '05, one of our newest faculty members who is also a graduate of the College. We hope you had a good summer and can't wait to work with you all!

The Office of Alumni/ae Affairs raises funds for the college and helps alumni/ae stay connected to Bard in many ways - some of which can involve YOU.

- Please let us know if you are inviting alumni/ae to your classes or programs. We can co-sponsor events, help promote and we always give them a little gift. Email alumni@bard.edu
- If you want to connect with Bard alumni/ae - we can help! Just email us at alumni@bard.edu.
- Visit alums.bard.edu/news to keep up on Bard alumni/ae making news. And follow us @bardalumni
- We work closely with the Career Development Office (CDO) to bring alumni/ae back to campus for networking and career events. Please make sure to encourage your students to attend these events. Bard alumni/ae are one of the students' greatest resources.
- We are always here in the Anne Cox Chambers Alumni/ae Center—just across 9G. Please feel free to stop in. We also have a space available to reserve for meetings and events—the Seena and Arnold Davis '44 Living Room (and yes, Arnold is our oldest alumnus and we talk to him all the time!)
- And REMEMBER. Please always spell out 'Alumni/ae' and put class years of all visiting alumni/ae in any communications (we can tell you any alumni/ae' class year)—and if you, yourself, are an alumnus/ please add your class year on your signature like this—Jane Brien '89.

Thank you!

Jane Brien '89, director of alumni/ae affairs

Tyler Williams '19, MAT '21, assistant director of alumni/ae affairs

Catherine Susser, development officer and reunion manager

Teresa Mandrin, alumni/ae engagement associate

from the **Dean of International Studies**

Jennifer Murray

This semester Bard welcomed approximately 30 new international students and a dozen exchange students. Over 48 countries are represented among Bard's student body of 500 international students. Stephen Mattos, Director of Visa and Immigration Services, is leaving his post later this month. Carmen Smith, who has worked at the IILE for the last several years has been promoted to the Director role for OISSS. The [OISSS website](#) has resources and information for departments planning to host or hire international scholars. OISSS regularly offers van trips to the Social Security Office in Poughkeepsie to assist new students and scholars in applying for a social security number in order to access employment benefits associated with their status.

Bard is an inaugural member of [Welcome Corps on Campus](#) and welcomed two first-year refugee students to campus for L&T. The program invites college campuses to sponsor refugee students who arrive to the United States with a pathway to permanent residency. Bard's Private Sponsor Group members are Danna Harman (DoSA), Claudette Aldebot (Inclusive Excellence), Yakira Teitel (Health Services), Ruth Zisman (Dean of Studies Office), Erin Cannan (CCE), Abigail Swartvagher (OISSS), and Jen Murray (IILE). Bard faculty, staff, and students will have the opportunity to participate in a virtual Train the Trainer event presented by Every Campus a Refuge and the Refugee Resettlement Initiative, the training will occur on October 24 and 25.

Bard students traveled to China, Italy, France, and Japan for language study this summer, and nearly 70 students will study in NYC or abroad in 16 countries this fall. Students with an interest in study abroad and special scholarship programs should attend a "Nuts & Bolts" session or drop in at the Institute for International Liberal Education at 1 Blithewood Road to learn more. We will celebrate International Education Week from November 18-22 with special

meals, workshops, and cultural events. We will be signing an agreement through which Bard students can apply for USA2Holland grants. The grant offers support for internships to high-achieving and low-income American college students, providing financial support, travel stipend and visa support to attain experiential, uniquely international work experience in the Netherlands. A nomination process will be established in coordination with the Netherlands-American Foundation.

from the **Director of the Bard Learning Commons (BLC)**

James Keller

The Learning Commons is Bard's writing and learning center – home to writing support, the college writing program, one-on-one writing consultation, learning strategies and senior project tutoring, and subject-specialized tutoring. Tutoring is offered in seat, but ask us about our online offerings as well. We have extended our connected tutoring and signature collaborative tutor training to the Bard Baccalaureate program, BPI, MAT, BGIA, BELL, OSUN, OSUN Hubs, BHSECs, Bard microcolleges, and the communities whom we and these groups serve. On campus, we provide trained peer writing, research, and reading support as well as discipline-specific and academic skills mentorship. Our tutors support Bard seniors one-on-one writing their projects; and this spring, we worked with more than 25 senior project writers consistently. Last year, we offered more than 80 total hours of one-on-one writing tutor support, workshops, in-class presentations, and study room sessions for seniors.

Learning Commons tutors delivered over 6,000 hours of peer learning support in all subjects this past year, and we added several weekly study and resource rooms to our list of community-building learning spaces. Trained peer writing consultants talk about course readings, use informal writing as a tool for discovery, help students reflect on their learning process, and think through ideas for essay topics. Tutors also help their peers revisit writing that merits revision, generate research questions, develop written arguments, and take written drafts to the next level. Students may make appointments, learn about study rooms, or arrange subject tutoring at a time of their convenience by contacting us at blc@bard.edu This past spring, our Learning Strategies program provided an unprecedented number of mentorship hours to Bard students – in taking effective notes; engaged reading; evaluating, integrating, and using sources ethically; determining personal learning styles and keeping organized; time management; study strategies; etc. – in the context of academic assignments.

BLC faculty field 18 sections of credit-bearing courses – in college writing; inclusive pedagogy; public speaking; “exploring the hidden curriculum”; information literacy; college writing; developmental mathematics; and English as a second language. Since October of last year, we have provided guidance for faculty and students working in the context of large language models like ChatGPT. Learning Commons courses remain open to all Bard students. We also host virtual international tutoring for students taking OSUN courses – pairing tutors in Annandale with students and their tutor peers from Africa, South America, Central Asia, and across the Bard-Network. The Learning Commons dedicates our well-known writing fellows to classes by faculty request (84 last AY); these highly trained peer writing tutors work with all students in the class one-on-one during the semester. Writing fellows are happy to collaborate with faculty to provide course and program-specific workshops and support. If you are interested in having a writing fellow dedicated to your course or learning more about this program, please contact Director Jim Keller at keller@bard.edu

All BLC services are free. We may be reached at x7812 or blc@bard.edu. Also, visit our website at <https://www.bard.edu/learningcommons/> See you in the BLC!

It has been a busy summer full of changes at Stevenson Library, and we want to share some exciting updates about new roles for some of our staff, changes to our space, and our new library discovery system, Worldcat Discovery.

New Staff Roles

Several members of our staff have taken on new or expanded roles this summer:

STEVENSON LIBRARY TEAM

Alexa Murphy — Associate Director of the Library. In this role, Alexa will manage the day-to-day operations of the library, oversee the library's services and policies, and coordinate outreach and events. She will also work closely with me on strategic planning and assessment.

Jeremy Hall — Education & Information Literacy Librarian. Jeremy will focus on developing the library's information literacy curriculum and coordinating instruction, working closely with our teaching librarians and Jane Smith, Associate Director of Library Writing Support. In doing so, he will be giving up his longtime role as manager of Digital Commons, which will now be managed by Palash Bosgang. Jeremy's office is now located on the LL of the library

Melanie Mambo — Discovery & User Experience Librarian. Melanie's focus will shift from the acquisition of e-resources to ensuring that the library's website and digital collections are discoverable, accessible, and in line with the priorities of the Bard community.

Hannah Cremo — Access Services Manager. Hannah oversees the daily operations of the library's circulation, reserves, and collection access functions, including managing the circulation and reserves desks in collaboration with Willa Pruitt, circulation and reserves assistant.

Shirra Rockwood — Cataloging and Technical Services Librarian. Shirra will be working closely with Amanda Arceneaux, Systems & Metadata Librarian, to catalog and process new acquisitions. Her previous responsibilities in book acquisitions will now be managed by Jordan Boyajian-Torres.

ARCHIVES, SPECIAL COLLECTIONS, MONTGOMERY PLACE TEAM

Helene Tieger — Head of Archives and Special Collections. In this expanded role, Helene will continue her longtime work as our college archivist while working closely with me to create a permanent home for special collections on the Massena campus.

Palash Bosgang — Digital Preservation Manager. Palash will coordinate efforts to create, maintain, promote, and preserve digital collections in the Bard Archives & Special Collections. This will include managing our institutional repository, Digital Commons.

Michael Orsini - Archives Assistant. Michael will support all Archives & Special Collections activities including processing collections, reference support and cataloging.

New Accessible Entrance

We're delighted to share that the lower-level entrance to the library (ground level from Library Road) is now a **fully accessible, public entrance to the building with an automatic door**. This entrance will be open whenever the library is open.

This space is also now home to the **course reserves desk** and a new seating and reading area sponsored by the Bard Reading Initiative.

This project was a true cross-campus collaborative effort. Many thanks to Vincenzo Tiberia, Carter Brown, and their team at B&G for their work to renovate this space, to the Disability Access Services team for their input in the design, and to the Bard Reading Initiative for providing support for new furnishings.

First Floor Refresh

We have also made some changes to the first floor to create more study and gathering space and to highlight our collections. You'll find:

- Most computers have been moved to the alcove where vending used to be located.
- The "browsing" area now features all new acquisitions to the library, organized by subject according to Library of Congress call numbers. Here you'll also find rotating displays throughout the year featuring faculty selections and other topical collections.
- A refreshed area for exhibitions of art and archives, with new, more accessible display cases.

New Library Discovery System

As many of you know, we recently migrated to a new catalog and discovery system called Worldcat Discovery. You can access Worldcat Discovery directly through the main search box on [our website](#) or go directly to [the Worldcat Discovery portal](#). Worldcat Discovery streamlines access to many of our resources and offers a robust set of tools to help you manage your research. Please see [this guide](#) for helpful information about using the new system. **Because many of our links have changed, we suggest that you delete any bookmarks to our resources, clear your cache, and then navigate again to your favorite resources directly through our website.**

If you have any questions about using the new system, changes to the space, or other aspects of library services, reach out to us anytime. You can [find a full staff list with contact information here](#), or contact us via [Ask a Librarian](#) anytime.

Academic Program Liaisons

This year, each academic program has a liaison librarian assigned to it (rather than the division-wide liaisons we had in the past). Liaisons can collaborate with you on collection development, research instruction, and student support. We hope this new structure facilitates greater collaboration between the library and academic programs on library collections and course support.

You can expect to hear from your liaisons soon with more specific ideas and information about how they can work with you, but feel free to reach out to them directly with any questions or requests. The program liaisons are listed below and can also be found on the [faculty page](#) on the library website.

Liaison Librarians for AY 24-25

Division of the Arts

Melanie Mambo: *Architecture, Dance, Studio Arts, Theater and Performance*

Jordan Boyajian-Torres: *Art History and Visual Culture, Photography, Film and Electronic Arts*

Jeremy Hall: *Music*

Languages and Literature

Amanda Arceneaux: *Classical Studies, Medieval Studies*

Alexa Murphy: *Literature, Written Arts*

Science, Mathematics, and Computing

Jordan Boyajian-Torres: *Chemistry, Biology, Mathematics, Physics*

Jeremy Hall: *Psychology, Computational Sciences*

Social Studies

Alexa Murphy: *Anthropology, Religion, Politics*

Jeremy Hall: *Historical Studies, Philosophy, Sociology*

Amanda Arceneaux: *History*

Bill Walker: *Economics*

Interdivisional programs: Reach out to Jordan Boyajian-Torres for collection requests and Jeremy Hall for instruction and other course support.

Bard Conservatory of Music(graduate and undergraduate programs): Jeremy Hall

MFA Program: Jordan Boyajian-Torres

Human Rights and the Arts: Melanie Mambo

BCEP: Jordan Boyajian-Torres

Levy Institute: Bill Walker

MAT Program: Alexa Murphy

Key Library Contacts

With all the changes, you might be wondering who to contact with various questions:

- **Collection requests** – Contact Jordan Boyajian-Torres or use [the collection request form](#) to request specific items be purchase for the library’s collection.
- **Course reserves** – Use the [course reserves form](#) or the [course reserves purchase form](#), and contact Hannah Cremo with questions.
- **Digital Commons** – Contact Palash Bosgang for questions about the collections housed in our institutional repository, Digital Commons.
- **Events** – if you’d like to collaborate on an event, exhibit or display in the library, contact Alexa Murphy.
- **Archives and Special Collections** – Contact Helene Tieger or use the [archives request form](#) to request access to items in our [archives](#).
- **Montgomery Place Collections and visual resources** -- Contact Amy Herman.
- **Library policies**– If you have questions about library policies, contact Heather Topcik and Alexa Murphy,
- **Electronic resources** – If you’re having trouble using our electronic resources please email librarytech@bard.edu or contact Melanie Mambo.
- **Library instruction** – For general questions about the library’s instructional program, contact Jeremy Hall. To request library instruction for a class, please contact your liaison librarian (listed below).
- **Interlibrary loan** -- Email ill@bard.edu or contact Carl Hoyt.
- **Room reservations** – To reserve a meeting room in the library, please use Bard’s space management system at space.bard.edu.

from the **Bard Center for Civic Engagement**

Terry Roethlein and Sarah deVeer '17

Get Engaged Conference Comes to Berlin

The Get Engaged Student Action and Youth Leadership Conference held its July 2024 event in Berlin, hosted by Bard College Berlin and the Hertie School. The annual gathering, organized by the OSUN Civic Engagement Initiative in partnership with the Bard College Berlin Civic Engagement Office and the Bard College Center for Civic Engagement, brought together participants from 22 partner institutions representing 50 different countries. Erin Cannan, vice president for Civic Engagement at Bard, has been leading the Get Engaged Conference for 11 years and said “Meeting others that are so different creates an opening of the heart that takes you across a bridge of understanding.” Inspiring student projects addressed pressing challenges, including Sierra Ford ’26, from Bard

College, who has been running Election@Bard, which works to safeguard the right to vote by registering Bard community members (especially students) and helping them learn about candidates.

Community Action Awards

This summer, 22 Bard students received a Community Action Award from the Center for Civic Engagement and Career Development Office. These awards range from \$1,500 to \$4,000 to support student efforts to engage with communities locally, nationally, and internationally. The awards fund participation in unpaid (or underpaid, depending on availability of funding) internships that address issues impacting people around the world. This year, some of the organizations where students interned included UNESCO, Legal Aid Society, PEN America, US House of Representatives, Hudson Valley Seed Co., and Dutchess County Pride Center.

Election@Bard Hits the Ground Running!

On Arrival Day, 200 first-year students registered to vote at the convenient station set up by the Center for Civic Engagement's Election@Bard initiative. Approximately half of the incoming class of 2028 had registered to vote in either Dutchess County or their hometown while another 250 signed on to Motivote, an online platform that provides students with accessible and streamlined voter information throughout the academic year. When asked what motivated them, many stressed the importance of their demographic group voting, especially during a year marked by yet another contentious presidential election. Election@Bard has more events planned for the fall, including volunteer registration training and Constitution Day on September 17, featuring an informative panel discussion.

Democracy Day

As part of Bard's first ever Democracy Day, first-year students took in a vibrant panel discussion on "The Fight for Democracy, Locally, Nationally, and Globally" with faculty, staff, alumni/ae, and representatives from the nonprofit and philanthropic arenas. Attendees heard about the impacts of successful student and alumni/ae civic engagement projects and listened to helpful commentary on current challenges to democratic practice, ranging from the struggle for student voter access to the systemic silencing of marginalized voices and attempts by government to hollow out important institutions. The popular event was followed by a series of opportunities for students to volunteer and participate in civic engagement-focused workshops.

Upcoming Events

Some important events CCE is sponsoring this semester include: Take Action Tuesdays, facilitated by local activist callie mackenzie; ongoing Global Engagement Fellows Monthly Civic Engagement Workshops; Afghan Students Conference October 16-17; Virtual Student Leadership Conference October 19-20.

from the **Director of Horticulture & Arboretum**

Amy Parrella

Bard Arboretum

Bard College was awarded a \$1 million grant from The Burpee Foundation to be paid over four years towards supporting the new Burpee Trial Garden, which will be located at the Montgomery Place Campus. The trial garden will revitalize the fallow lawn beds at Montgomery Place that historically grew vegetables and flowers and will engage Bard students in horticultural research and hands-on scientific investigation with real-world applications. Trial gardens measure how well a specific cultivar or variety will perform in a specific area or growing condition. These trials evaluate new varieties compared to an industry standard plant from germination to maturity or from seed to harvest. Bard students will design and evaluate the cultivation of new and experimental seeds and plants and

explore climate-resilient plant introductions and adaptations at the Burpee Trial Garden. Students will utilize the scientific method, plant and insect identification, pests and diseases, genetics, biology, plant breeding and propagation, and the effects of climate on plant vigor. This project will help to determine how these plants perform in our mid-Hudson River Valley growing conditions, inspire the gardening public to explore new varieties and plant combinations, and educate the professional horticulture industry and garden visitors about its findings and recommendations.

from the **Business Office**

New and continuing divisional chairs and program directors are encouraged to (re)acquaint themselves with the Business Office's many online resources: <https://www.bard.edu/budgetoffice/about/>. Questions about budget management? Go to FAQ for quick answers (<https://www.bard.edu/budgetoffice/faqs/>) or contact the Business Office via email (budget@bard.edu).

Faculty Research Support:

As outlined in the Faculty Handbook, the Faculty Research and Travel Fund supports professional work by faculty members (6/13ths time and above). This fund provides reimbursement of up to \$2,000 for professional work during that academic year. Beginning this year, up to \$500 of your allotment can be used toward the purchase of books, memberships and subscriptions. Documentation of the activity, original receipts, and an itemized list and total of expenses for which reimbursement is being sought should be submitted to the appropriate administrative support staff for submission to the Dean's Office up to three times per year (please review the [full guidelines](#) for eligible expenses, reimbursement procedure, and other helpful information regarding this funding). Any questions regarding balance of funds or eligibility can be directed to Rachel Price, rprice@bard.edu.

Important Dates for 2024-2025

One check request per semester with all allowable expenses and documentation will need to be submitted to the appropriate administrative support staff for submission to the Dean's Office by the following deadlines:

Fall Deadline: December 31, 2024
Spring Deadline: May 31, 2025
Summer Deadline: August 31, 2025

Check mailing date: January 31, 2025
Check mailing date: June 30, 2025
Check mailing date: September 30, 2025

Research activity that takes place after May 31, 2025 will fall within the 2025-2026 fiscal year.

Reminder: Bard Email Lists and Usage Policy

As we begin another academic year, please take a moment to review the College's current email policy (Effective August 31st, 2015):

College-sponsored email networks form part of the College workplace, and thus are subject to different standards from other forms of communication through which faculty, staff, and students may choose to express their ideas. For this reason, and to ensure that these lists remain a reliable means of communication, it is important that users abide by the rules of communication outlined in the faculty, staff and student handbooks.

In addition:

- Impersonation of other mailing list users, e.g. faking the sending email address, is prohibited. Senders must use their assigned college email addresses to post to any email list and are strongly encouraged to include their full name in the body of the message.
- Commercial mailings and mailings that suggest College endorsement of any political candidate, organization, or ballot initiative are prohibited. More generally, because Bard College is a non-profit, tax-exempt organization and, as such, is subject to federal, state, and local laws regarding commercial and political activities, any commercial use of IT Systems for non-Bard purposes is generally prohibited, except when specifically authorized by the College and permitted under College rules.
- Harassment, bullying, and threats, including threats of physical harm, are prohibited, as are violations of privacy and communications that violate confidential employment processes and disciplinary proceedings. As emails using these lists are distributed in the workplace, they should not display materials or images that could constitute sexual or other forms of harassment.
- Use of specific email lists for purposes other than which they are intended is prohibited.

Email should be sent to the appropriate mailing list as described above: happening, pennysaver, faculty, staff, or college. If a member of the Bard College community wishes to send an email message that is not appropriate for the mass mailing lists described in this document, an independent list may be requested through the Bard IT Helpdesk. Subscribers of this list must be populated manually and all such lists will allow users to unsubscribe.

Violations of these rules are subject to special disciplinary processes associated with College email list usage, outlined below. For more information please see: <https://www.bard.edu/it/email-usage/>

Etiquette

Electronic forms of communication bear careful consideration because they are often constructed in an environment devoid of non-verbal cues that govern face-to-face interactions. Unlike verbal communications, they also constitute a permanent record. As a general rule, people should not write or post things that they would not say in a face-to-face conversation or at an open meeting. Mean-spirited messages, flaming, and ad hominem attacks are strongly discouraged. If you really need to tell unpleasant or offensive things to someone, it is better to do so in a private communication. Direct communication in person or over the telephone can often help resolve potential conflicts that electronic communications tend to exacerbate. Inundating a list with messages is inappropriate. Messages that are not intended for the community as whole should not be forwarded without seeking the author's permission.

Only send a message to the entire list when it contains information from which everyone can benefit. Send messages such as "thanks for the information" or "me, too" to individuals—not to the entire list. Do this by using the "Reply to sender" option instead of "Reply all."

When composing your announcement, please be considerate of those who are visually impaired. People of all ages may struggle to read small text. In addition, it is strongly recommended that you avoid using images (such as posters) as the sole content of your announcement. Software designed to read text aloud cannot interpret words contained in an image. If you must include an image that contains the important details of your activity or notice, please repeat the details as plain text somewhere else in your message.

Violation Adjudication

A message that fails to meet the list usage rules published above is a violation.

Alleged violations may be reported to the Office of Human Resources or to the Office of the Dean of the College. In consultation with the Information Resources Council and, as appropriate, a representative of the Faculty Senate or the office of the Vice President for Administration, these offices will determine whether a violation has occurred and may assess penalties, for instance, a temporary loss of privileges for posting to Bard email lists or a temporary removal from the Bard campus network. Decisions about alleged violations will be made in a timely fashion, which in most cases will be within 10 business days. Violations that are not penalized are still considered violations. While alleged violations are being investigated, temporary email access limits may be imposed on the alleged violator, depending upon the circumstances.

Violators may appeal their penalty by submitting their appeal in writing to the appropriate campus office. Appeals will be reviewed by the Vice President for Administration and Finance in a timely fashion, which in most cases will be within 5 business days. Violations are cumulative for an employee's entire time of employment at the College.

These disciplinary processes are designed specifically for email list usage: community members retain the right to initiate applicable internal grievance or disciplinary processes or to pursue external civil or criminal actions.

In preparing this policy, we have drawn from the policies developed at Hamilton College and Yale University, and we acknowledge our debt and appreciation.

Please visit our website www.bard.edu/doc/
for numerous links and resources for faculty and staff
Faculty Handbook (hardcopies available upon request in the Dean's Office)
Faculty Highlights & Accomplishments past and present
Faculty, Divisional, Senate, and Program Meetings schedule
Faculty Committee meeting minutes
Faculty Meeting minutes
Faculty Evaluation lists and schedules
Faculty Governance Resources
Faculty Committee List
Program Directors List
Faculty Search information
Faculty Transition List
Faculty Guidelines, Higher Education Resources and Support Network information
Faculty Accessibility Guidelines (link to Bard SensusAccess)
Bard Policies for Faculty

Volume 20, Number 1

This letter is intended by the Office of the Dean of the College to make information for faculty more accessible and available in an easy format. Where information is available on-line at our campus website

<http://www.bard.edu/doc>

you will be directed to that page. Please make use of the website; suggestions for posting of information and data are very welcome. The newsletters will be archived on the website. If you have questions or comments about this newsletter, please contact doc@bard.edu.

Undergraduate Faculty Highlights and Accomplishments Summer 2024

*compiled through submissions from faculty

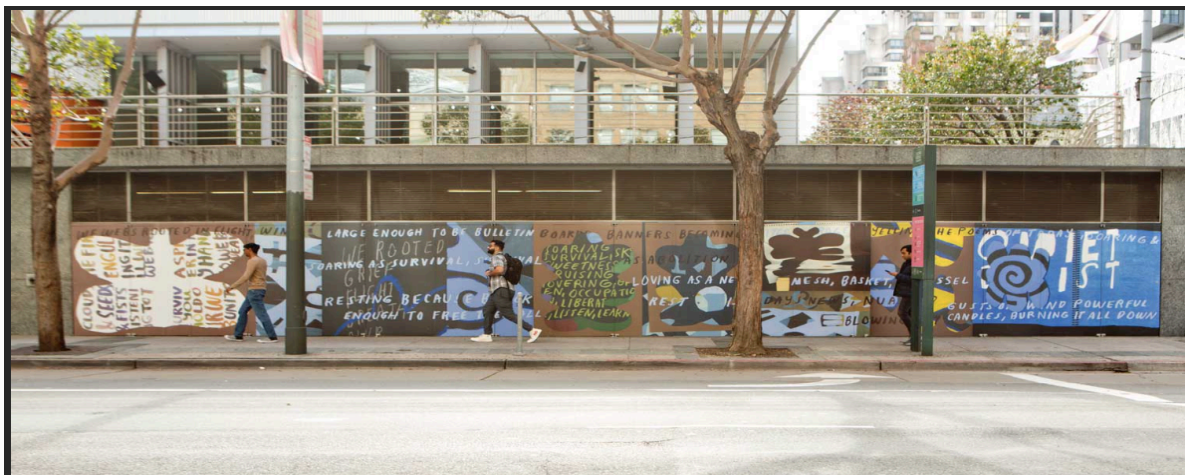
Recent publications by **Susan Aberth** include: “El Dorado: Myths of Gold Part II,” review of Americas Society, NY exhibition, *Artforum*, Summer 2024; “Coming Out of a Dark Room: Fraternal Ties, Seen and Unseen,” *Sci-Fi, Magick, Queer L.A.: Sexual Science and the Imagination*, One Archives at the USC Libraries, USC Fisher Museum of Art, Los Angeles, 2024 (August); and “Maja Ruznik: Portals to the Other Side,” Maja Ruznik Gouaches. Karma Gallery, New York, 2024 (August).

Eredità Culturale e Memoria dei Totalitarismi, a volume co-edited by **Franco Baldasso**, was published by Pearson, Milan 2024.

Recent publications co-authored by **Valerie Barr** include: “Visualizing Progress in Broadening Participation in Computing: The Value of Context,” *Communications of the ACM*, 67, 7 (July 2024); “Developing and Measuring the Adoption of Identity-Inclusive Computing Tenets,” ASEE-2024, Washington DC; and “ACM 2023: CS + X: Challenges and Opportunities in Developing Interdisciplinary-Computing Curricula,” *ACM Inroads*, Volume 15, Issue 3.

Mary Robison, The Art of Fiction, No. 263, an interview by **Rebecca Bengal**, was published in *The Paris Review’s Art of Fiction Series*, Summer 2024. In June 2024, Bengal's collection *Strange Hours: Photography, Memory, and the Lives of Artists* (Aperture) was reviewed in *Afterimage: The Journal of Media Arts and Cultural Criticism* (University of California Press). *There Is No Light at the End of the Tunnel Because the Tunnel Is Made of Light* (TBW Books) includes a short story by Bengal, "On New Year's Day in Los Angeles," that was shortlisted for the Photo-Text Book Award at the 2024 Rencontres d'Arles Book Awards. Bengal also contributed an essay about the photographs of Evgenia Arbugaeva to *Night Fever: Film and Photography After Dark* (Walther König, June 2024, ed. Shanay Jhaveri).

Lukaza Branfman-Verissimo’s body of work, *F.L.I.G.H.T. S.C.H.O.O.L.*, a large-scale public art work is up on the outside walls of the Yerba Buena Center for the Arts in Downtown San Francisco, CA, (2024- up for 2 years). Spanning three sites (YBCA loading dock door, entrance to the Third Street courtyard, and a line of doors at the corner at Third and Mission Streets), the work can be viewed in sections, but is encouraged to be taken in a whole, perhaps even by moving across the street to get a full view. <https://ybca.org/event/we-fly-for-a-liberated-we-we-rooted-in-flight/>.



Works by **Lukaza Branfman-Verissimo** and **Tschabalala Self** are included in the group exhibition, *Dear Mazie*, at the Institute of Contemporary Art in Richmond, VA, from September 6, 2024 through March 9, 2025.

In July 2024, **Lauren Curtis** traveled to Buenos Aires to launch the book, *Imprints of Dance in Greek and Roman Antiquity / Improntas de danza antigua* (eds. Z. Alonso Fernández and S Olsen. UAM Ediciones, 2024) at the Dance Studies Association annual meeting. Authors of individual chapters spoke about their approach to the conference topic, *Cartographies of Movement*, including Curtis' talk on "conquest, choreography, and the origins of culture in Latin poetry." The book will have its (virtual) UK/USA launch event in November.

In June 2024, **Jacqueline Goss** screened her film *OR119* at the National Gallery of Art in Washington, DC. The film is a theoretical musical about Wilhelm Reich made in collaboration with Bard faculty emeritus **Peggy Ahwesh**.

In June 2024, **Chong Gu** was chosen by The Museum of Contemporary African Diasporan Arts and Asian American Arts Alliance to be part of the 2024-2025 cohort of New York-based artists for the 3rd annual Bandung Residency. Gu was also a MacDowell fellow in August 2024.

In June 2024, **Sarah Hennies'** large ensemble work, "Motor Tapes," was performed as part of the 2024 Whitney Biennial at the Whitney Museum of American Art. This work and a brief interview was also featured on a broadcast on BBC Radio 3's "New Music Show" hosted by Kate Molleson.

In July 2024, **Elizabeth Holt** presented her paper "Palestine and the Temporality of the Archive," and moderated a panel at the Law and Print in Postcolonial Contexts: Censorship, Copyright, and Piracy Conference put on by the International Research Network of Postcolonial Print Cultures at the University of Chicago Center in Paris.

Felicia Keesing was awarded the 2024 C. Hart Merriam award from the American Society of Mammalogists. The award is given to eminent scholars in recognition of outstanding research in the study of mammals over a period of at least 10 years.

In May 2024, **Cecile Kuznitz** participated in a roundtable on "October 7, Academic Life, and American Jewry" at the biennial conference of the American Jewish Historical Society, and in July 2024, she presented a keynote lecture at the conference "Building Bridges: The Jews of Historical Lithuania" held in Vilnius, Lithuania.

Recent paper presentations by **Peter Laki** include: "Bartók and the Viola," at the International Symposium on the Viola Concerto of Béla Bartók in Budapest, Hungary; and "Lohengrin the Fraud: Post-Heroism and Disenchantment in Four 21st-Century Stagings of Wagner's Opera" at the INCSA (International Nineteenth-Century Studies Association) Conference in Durham, England.

Door, by **Ann Lauterbach** (Penguin 2023), was shortlisted for the Griffin International Poetry Prize 2024.

In August 2024, **Huiwen Li's** oracle-bone script Chinese calligraphy work, titled FRIENDS and measuring 4.5" x 2.2", was accepted for the 1st National "Fengqiao Cup" Oracle-bone Script Calligraphy & Seal Art Exhibition in China. This exhibition was organized by the Jiangsu

Association of Oracle-bone Script Research, a renowned academic organization in China.

In June 2024, **Tara Lorenzen** participated in the Joan Jonas retrospective *Good Night Good Morning* at the Museum of Modern Art (MoMA). Lorenzen performed Jonas's original solo role in "Mirror Piece I and II."

Dawn Lundy Martin's new book of poems, *Instructions for the Lovers*, was published by Nightboat Books in June 2024.



Tanya Marcuse's work was featured in "Nature Imagined" from May 3 through June 8, 2024 at Object Space in Atlanta, Georgia. An in-depth interview with Marcuse was published in the summer issue of About Photography: Tanya Marcuse: Fruitless|Fallen|Woven; and a film about Marcuse's process and use of plants was released on August 2nd by PlantPop.

Wyatt Mason's essay, "The Scavenger of History," on translation and Eliot Weinberger, appeared in the June 2024 issue of *Harper's*.

In July 2024, *Someone Like Us*, by **Dinaw Mengestu**, was published by Knopf. Mengestu was interviewed by *The New York Times* about the book, which was a *New York Times Book Review* Editors' Choice.

Emily McLaughlin was named an ACS Fellow for 2024 by the American Chemical Society (ACS). The prestigious fellows program recognizes and honors ACS members for outstanding achievements in and contributions to science, the profession, and ACS, reflecting not only excellence but also the diverse contributions to the field. This year, the ACS selected 37 fellows who were recognized in an award ceremony and reception at the ACS Fall 2024 meeting in Denver, Colorado.

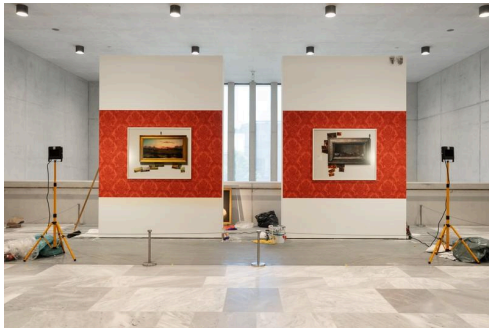
Recent publications by **Alys Moody** include: "Black Mythologies: René Ménil, Negritude, and the Critique of Anticolonial Primitivism," *Comparative Literature* 76.2 (2024); and "Translation in the Global Modernist Archive," *The Bloomsbury Handbook of Modernist Archives*, Bloomsbury (2024). In July 2024, Moody gave a talk at The University of Oxford, "Hungry Artistry: Kafka and the Art of Starvation," for *Oxford Kafka24*, which has been released as a podcast/video: <https://podcasts.ox.ac.uk/hunger-artistry-kafka-and-art-starvation>

In June 2024, **Isabelle O'Connell** gave a four concert tour of Ireland with her ensemble *Evlana*, performing works by John Corigliano, Cassandra Miller, Siobhán Cleary and Webern's quintet arrangement of the Schoenberg Chamber Symphony. In July 2024, she gave two solo recitals in Germany at the Kunstwerkstatt am Hellweg, as part of *Zeitgeist Irland 24*. Her recital program entitled

'Breathing Spaces' explored connections between music, architecture and visual art. O'Connell was also featured on Lyric FM radio on July 22nd, on Classical Daytime's *Five of a Kind* program.

Godwin, by **Joseph O'Neill**, was published by Pantheon in June 2024. O'Neill was profiled in *The New York Times* about the book, which was a *New York Times Book Review* Editors' Choice.

Gabriel Perron and **Swapan Jain** received a grant from the Stone Barns Center for Food and Agriculture to study the impact of farming practices on the nutritional content and microbial diversity of fermented vegetables. This grant adds to an existing grant from Farm Hub to study soil health.



Walid Raad currently has two solo exhibitions: *Cotton under my feet: The Zurich Chapter* at Zurich Kunsthaus/Zürcher Theater Spektakel in Zurich, Switzerland, August 15 through November 3, 2024; and *Festival of (in)gratitude* at Sfeir Semler Gallery in Beirut Lebanon, from August 7 through January 3, 2025.

Exhibition view Kunsthaus Zürich, 2024 Foto Franca Candrian



Installation view Festival of (in)gratitude, 2024, Sfeir Semler Gallery Karantina, Beirut

In July 2024, “Frozen,” **James Romm's** review on the "Awe of the Arctic" exhibition at the New York Public Library appeared in the on-line edition of the *New York Review of Books*.

In August 2024, **Matt Sargent** was an artist-in-residence at the Avaloch Farm Music Institute.

In June 2024, **Sophia Stamatopoulou-Robbins** gave a talk on the state of Gaza's physical infrastructures for "Palestine under Pressure: Policies Constraining Social Infrastructure," as part of the School of Oriental and African Studies (SOAS) project Influencing the Corridors of Power (ICOP). Recent publications by Stamatopoulou-Robbins include: "Absenting as a Repertoire of Action: A Demolition, a Dump, and a Garden," *Comparative Studies of South Asia, Africa and the Middle East* 44(2): 342–351 (Aug 2024); "Rubble, Control, Dependence: What Infrastructure Tells us about Israel/Palestine," *Present Tense*, American Anthropological Association (7 August 2024); and "Animals, STS, and the Problem of Humanity in Gaza," Society for Social Studies of Science (21 August 2024).

Olga Touloumi co-edited *Field Notes: Athens in Flux*, a Special Issue of *Architectural Histories* V. 12, n. 1 (2024), which included "Introduction. Athens in Flux," co-authored by Touloumi. In June 2024, she co-organized the panel "Architektonisses stin Omichli, Archaeologikoi Dialogoi 2024," for the Conference Dialogoi stin Omichli in Greece; and her interview, "Architecture and Radio," by Jessica Kelly and Matthew Lloyd Roberts, was included in the *Architectural History* Podcast Series of the Society of Architectural Historians, Great Britain.

In June 2024, **Julia Weist** was awarded a 2024 Yaddo Residency in the Visual Arts category. This residency is offered annually to approximately 275 professional creative artists from all nations, individually or as collaborative teams, working in choreography, film, literature, musical composition, painting, performance art, photography, printmaking, sculpture, and video. *Private Eye*, a solo exhibition of her work, will be at Moskowitz Bayse gallery in Los Angeles, September 14 through October 19, 2024.



In June 2024, **Thomas Wild** gave a talk on Hannah Arendt's multilingual poetics at the international conference, "A Profusion of Tongues - Migration, Multilinguality, and Writing," at the Deutsche Literaturarchiv Marbach.

Foibles & Avoidance, by **Sara Winston**, was published by National Monument Press in July 2024; her print *Our body is a clock* (October 17, 2019), was acquired by the Jewish Museum in New York, NY and is now part of their permanent collection; and she was the recipient of a 2024 Puffin Foundation Grant from the Puffin Foundation to go toward production of her forthcoming book *Our body is a clock: The Untold Time*.

Macroinvertebrate and vertebrate fauna of temporary pools, Hudson River Valley, New York, USA, co-authored by **Emily White**, was published in the *Journal of Natural History*, vol. 58, issue 25-28.

Japheth Wood organized and ran the Bard Math CAMP, a one-week math enrichment program at Bard for middle school students. The program attracts local students from Red Hook, Tivoli, Rhinebeck, Kingston, Saugerties, New Paltz, Poughkeepsie, as well as New York City, the Boston Area, and this summer one student from Vancouver, Canada. Each summer features a mathematical theme that is explored through math, computer science and art. In its eleventh year of the program, this was the summer of polygons and polyhedrons.